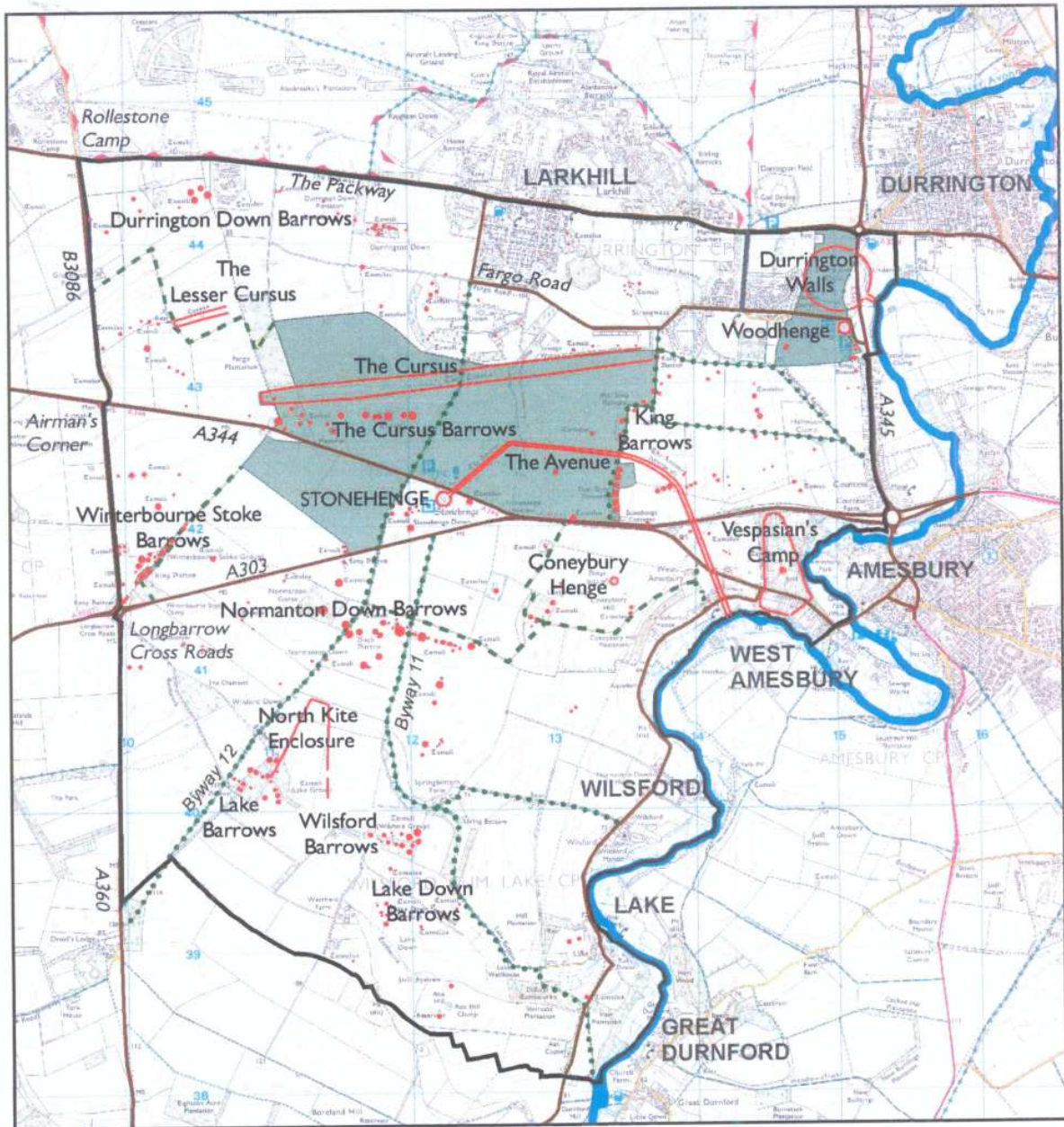


Map 4: Access



- Stonehenge World Heritage Site
- Main Archaeological Monuments
- River Avon
- Access
- Roads

Stonehenge and Woodhenge are in the care of English Heritage and there is free entry to Woodhenge. Many of the other prehistoric monuments are on land owned by the National Trust and open access on foot is permitted in the area shown on the map. The rest of the World Heritage Site is in private ownership and access is restricted to public rights of ways and permissive paths.

